



Organized by
**PAKISTAN PLASTIC
MANUFACTURERS ASSOCIATION
(PPMA)**

EVENT BRANDING OPPORTUNITIES

**SUBMISSION
DEADLINE**
20th December 2026

Book online at:
www.pakplas-expo.com

PAKPLAS

Pakistan's Only Official Exhibition for
Plastic, Rubber & Recycling

7th - 9th January
Lahore Expo Center

2027

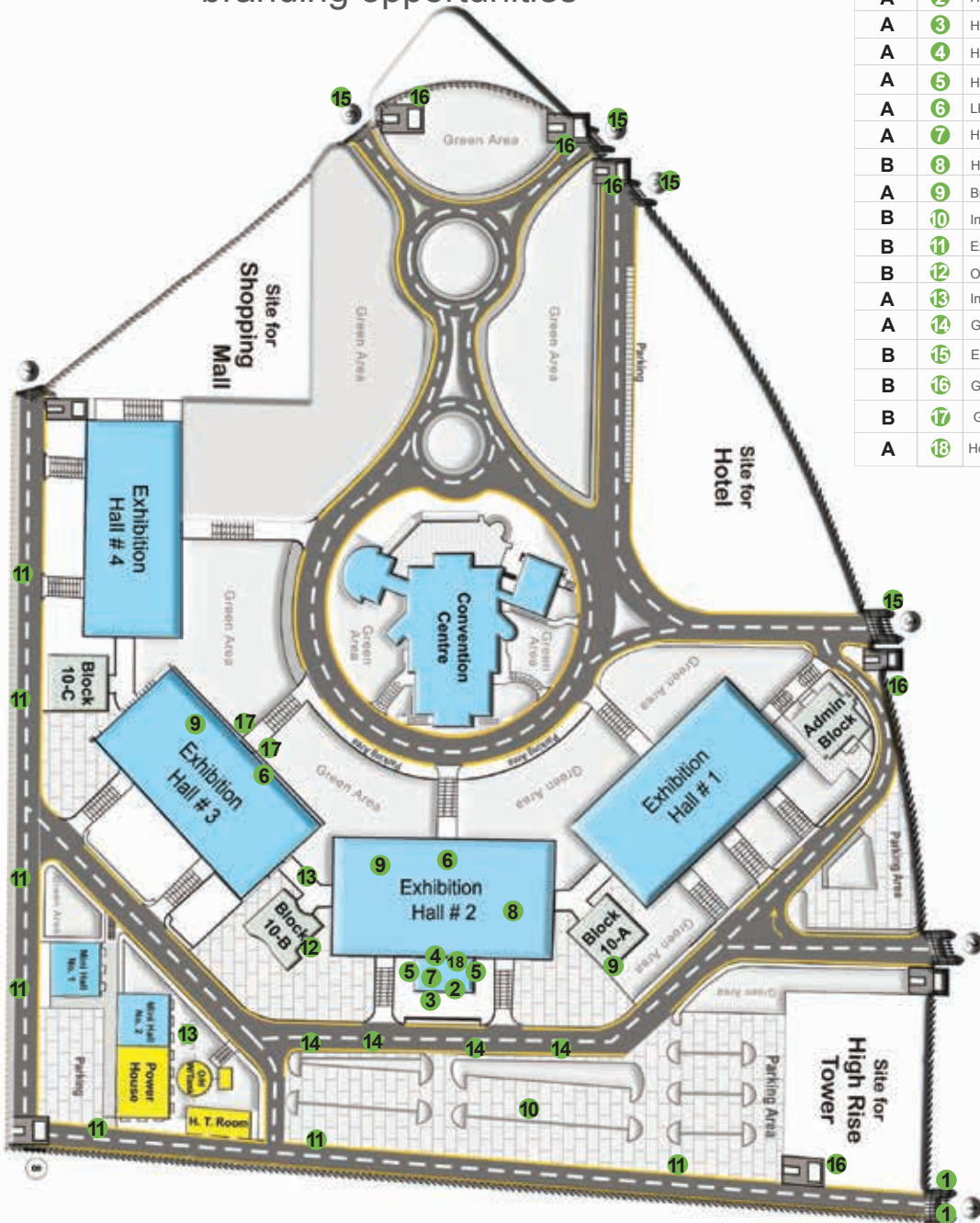
www.pakplas-expo.com.pk

INTERNATIONAL

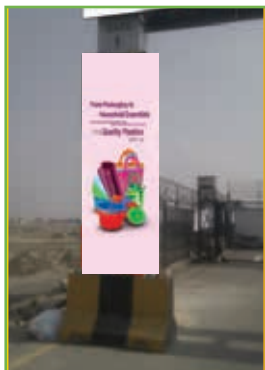
Advertising Options

Master Layout of Expo Centre alongwith branding opportunities

Category	POS#	Description
A	1	Main Gate Expo Centre (Gate 1)
A	2	Hall 2 Deck - Top Glass
A	3	Hall 2 Deck - Branded Towers
A	4	Hall 2 Entrance - Reception top
A	5	Hall 2 Reception (Side Walls)
A	6	LED AD Spots
A	7	Hall 2 Registration
B	8	Hall 2 & 3 Balconies
A	9	Building 10-A
B	10	Inside Expo Centre Streamers
B	11	Expo Centre Boundary Walls
B	12	Outside Generator Room
A	13	Interlinks - Hall 2 to Hall 3
A	14	Grills infront of Hall 2
B	15	Expo Entrance Gate # 3,4,5 & 6
B	16	Guard Room gate # 1,3,4,5 & 6
B	17	Gate 3 Exit
A	18	Hospitality Lounge Hall 2 Reception



Advertising Options



POS-1

CATEGORY: **A**

SPECIFICATIONS

Position: Main Gate Expo Centre (Gate 1)

Availability: Qty-2

Dimensions: w4' x h15'

Material: Flex with Frame

Price: USD. 335 each



POS-2

CATEGORY: **A**

SPECIFICATIONS

Position: Hall 2 Deck Top Glass

Availability: Qty-3

Dimensions: w25' x h10'

Material: Vinyl

Price: USD. 1,116 each



POS-3

CATEGORY: **A**

SPECIFICATIONS

Position: Hall 2 Deck

Availability: Qty-8 (4 Sided)

Dimensions: w4' x h10'

Material: Backlit

Price: USD. 670 each



POS-4

CATEGORY: **A**

SPECIFICATIONS

Position: Hall 2 Entrance Reception

Availability: Qty-3

Dimensions: w28' x h3'

Material: Flex with Frame

Price: USD. 335 each

Advertising Options



POS-5

CATEGORY: A



POS-6

CATEGORY: A

SPECIFICATIONS

Position: Hall 2 Reception - Side Walls

Availability: Qty-2

Dimensions: w35' x h40'

Material: Flex with Frame

Price: USD. 781 each

SPECIFICATIONS

Position: Hall 2 & 3 Balconies

Availability: Qty-2

Dimensions: w40' x h10'

Material: SMD Screen

Price: PKR. 30 per 60 sec spot



POS-7

CATEGORY: A



POS-8

CATEGORY: B

SPECIFICATIONS

Position: Hall 2 Registration Area

Availability: Qty-1

Dimensions: w32' x h3'

Material: Flex with Frame

Price: USD. 313 each

SPECIFICATIONS

Position: Hall 2 & 3 Balconies

Availability: Qty-40

Dimensions: w30' x h3'

Material: Flex with Frame

Price: USD. 223 each

Advertising Options



POS-9

CATEGORY: A

SPECIFICATIONS

Position: Building 10-A

Availability: Qty-3

Dimensions: w12' x h36'

Material: Flex with Frame

Price: USD. 670 each



POS-10

CATEGORY: B

SPECIFICATIONS

Position: Inside Expo Centre - Parking Area

Availability: Qty-40

Dimensions: w3' x h7'

Material: Flex with Frame

Price: USD. 36 each



POS-11

CATEGORY: B

SPECIFICATIONS

Position: Expo Centre Boundary Walls

Availability: Qty-100

Dimensions: w8' x h8'

Material: Flex with Frame

Price: USD. 156 each



POS-12

CATEGORY: B

SPECIFICATIONS

Position: Outside Generator Room

Availability: Qty-2

Dimensions: w12' x h36'

Material: Flex with Frame

Price: USD. 670 each

Advertising Options



POS-13
CATEGORY: **A**

SPECIFICATIONS

Position: Interlinks - Hall 2 to 3

Availability: Qty-6

Dimensions: w28' x h12'

Material: Flex with Frame

Price: USD. 558 each



POS-14
CATEGORY: **A**

SPECIFICATIONS

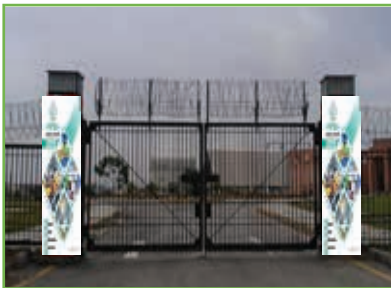
Position: Grill in front of Hall 2

Availability: Qty-30

Dimensions: w8' x h8'

Material: Flex with Frame

Price: USD. 156 each



POS-15
CATEGORY: **B**

SPECIFICATIONS

Position: Expo Entrance Gate # 3,4,5 & 6

Availability: Qty-8

Dimensions: w4' x h15'

Material: Flex with Frame

Price: USD. 134 each



POS-16
CATEGORY: **B**

SPECIFICATIONS

Position: Guard Room gate # 1,3,4,5 & 6

Availability: Qty-5

Dimensions: w12' x h12'

Material: Flex with Frame

Price: USD. 446 each

Advertising Options



POS-17

CATEGORY: **B**

SPECIFICATIONS

Position: Gate 3 Exit

Availability: Qty-2

Dimensions: w28' x h12'

Material: Flex with Frame

Price: USD. 670 each



POS-18

CATEGORY: **A**

SPECIFICATIONS

Position: Hospitality Lounge Hall 2 Reception

Availability: Qty-1

Dimensions: w16' x h16'

Material: Customized Wood Based

Price: USD. 3,571 each

Advertising Options

* **Technical requirements for submission of data for Point of Sale Selection**

1. All design work is required in 300 DPI. (Minimum resolution)
2. All designs are required with source files (PSD, CDR, AI).
3. Designs must be sent with relevant fonts.
4. Please send all Artwork and advertisements latest by 20 December, 2026.