



Organized by  
**PAKISTAN PLASTIC  
MANUFACTURERS ASSOCIATION  
(PPMA)**

# EVENT BRANDING OPPORTUNITIES

**SUBMISSION  
DEADLINE**  
20th December 2026

Book online at:  
[www.pakplas-expo.com](http://www.pakplas-expo.com)

# PAKPLAS

Pakistan's Only Official Exhibition for  
Plastic, Rubber & Recycling

7<sup>th</sup> - 9<sup>th</sup> January  
Lahore Expo Center

**2027**

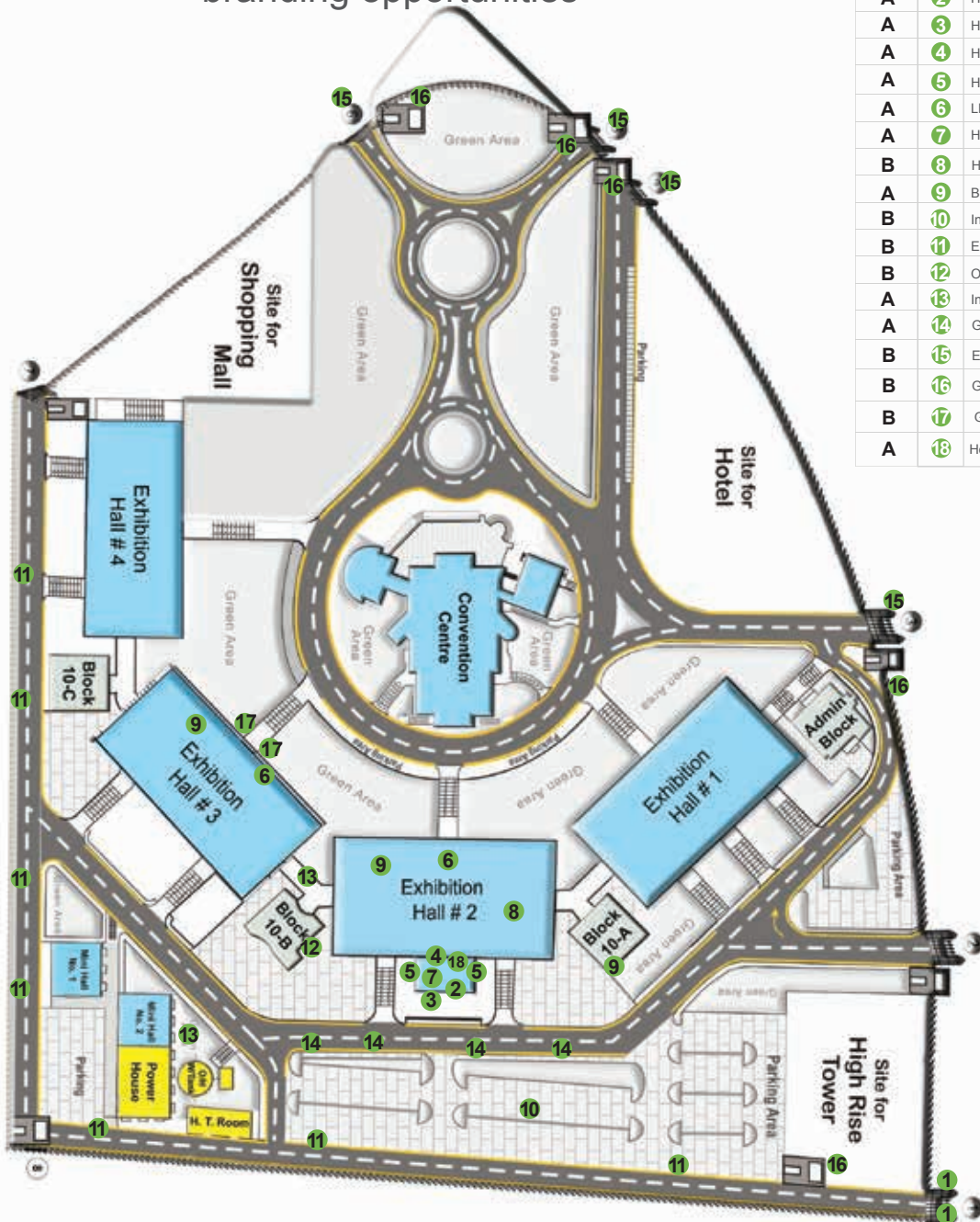
[www.pakplas-expo.com.pk](http://www.pakplas-expo.com.pk)

DOMESTIC

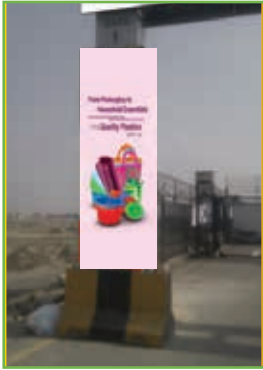
# Advertising Options

Master Layout of Expo Centre alongwith branding opportunities

Category	POS#	Description
A	1	Main Gate Expo Centre (Gate 1)
A	2	Hall 2 Deck - Top Glass
A	3	Hall 2 Deck - Branded Towers
A	4	Hall 2 Entrance - Reception top
A	5	Hall 2 Reception (Side Walls)
A	6	LED AD Spots
A	7	Hall 2 Registration
B	8	Hall 2 & 3 Balconies
A	9	Building 10-A
B	10	Inside Expo Centre Streamers
B	11	Expo Centre Boundary Walls
B	12	Outside Generator Room
A	13	Interlinks - Hall 2 to Hall 3
A	14	Grills in front of Hall 2
B	15	Expo Entrance Gate # 3,4,5 & 6
B	16	Guard Room gate # 1,3,4,5 & 6
B	17	Gate 3 Exit
A	18	Hospitality Lounge Hall 2 Reception



# Advertising Options



## POS-1

CATEGORY: A

### SPECIFICATIONS

**Position:** Main Gate Expo Centre (Gate 1)

**Availability:** Qty-2

**Dimensions:** w4' x h15'

**Material:** Flex with Frame

**Price: Members:** PKR. 75,000 each

**Non-Members:** PKR. 90,000 each



## POS-2

CATEGORY: A

### SPECIFICATIONS

**Position:** Hall 2 Deck Top Glass

**Availability:** Qty-3

**Dimensions:** w25' x h10'

**Material:** Vinyl

**Price: Members:** PKR. 250,000 each

**Non-Members:** PKR. 300,000 each



## POS-3

CATEGORY: A

### SPECIFICATIONS

**Position:** Hall 2 Deck

**Availability:** Qty-8 (4 Sided)

**Dimensions:** w4' x h10'

**Material:** Backlit

**Price: Members:** PKR. 150,000 each

**Non-Members:** PKR. 180,000 each



## POS-4

CATEGORY: A

### SPECIFICATIONS

**Position:** Hall 2 Entrance Reception

**Availability:** Qty-3

**Dimensions:** w28' x h3'

**Material:** Flex with Frame

**Price: Members:** PKR. 75,000 each

**Non-Members:** PKR. 90,000 each

# Advertising Options



## POS-5

CATEGORY: A



## POS-6

CATEGORY: A

### SPECIFICATIONS

**Position:** Hall 2 Reception - Side Walls

**Availability:** Qty-2

**Dimensions:** w35' x h40'

**Material:** Flex with Frame

**Price: Members:** PKR. 175,000 each

**Non-Members:** PKR. 210,000 each



## POS-7

CATEGORY: A

### SPECIFICATIONS

**Position:** Hall 2 & 3 Balconies

**Availability:** Qty-2

**Dimensions:** w40' x h10'

**Material:** SMD Screen

**Price: Members:** PKR. 5,000 each

**Non-Members:** PKR. 5,000 each

rates are for per 60 sec spot



## POS-8

CATEGORY: B

### SPECIFICATIONS

**Position:** Hall 2 Registration Area

**Availability:** Qty-1

**Dimensions:** w32' x h3'

**Material:** Flex with Frame

**Price: Members:** PKR. 70,000 each

**Non-Members:** PKR. 84,000 each

### SPECIFICATIONS

**Position:** Hall 2 & 3 Balconies

**Availability:** Qty-40

**Dimensions:** w30' x h3'

**Material:** Flex with Frame

**Price: Members:** PKR. 50,000 each

**Non-Members:** PKR. 60,000 each

# Advertising Options



## POS-9

CATEGORY: A



## POS-10

CATEGORY: B

### SPECIFICATIONS

**Position:** Building 10-A

**Availability:** Qty-3

**Dimensions:** w12' x h36'

**Material:** Flex with Frame

**Price: Members:** PKR. 150,000 each  
**Non-Members:** PKR. 180,000 each

### SPECIFICATIONS

**Position:** Inside Expo Centre - Parking Area

**Availability:** Qty-40

**Dimensions:** w3' x h7'

**Material:** Flex with Frame

**Price: Members:** PKR. 8,000 each  
**Non-Members:** PKR. 9,600 each



## POS-11

CATEGORY: B



## POS-12

CATEGORY: B

### SPECIFICATIONS

**Position:** Expo Centre Boundary Walls

**Availability:** Qty-100

**Dimensions:** w8' x h8'

**Material:** Flex with Frame

**Price: Members:** PKR. 35,000 each  
**Non-Members:** PKR. 42,000 each

### SPECIFICATIONS

**Position:** Outside Generator Room

**Availability:** Qty-2

**Dimensions:** w12' x h36'

**Material:** Flex with Frame

**Price: Members:** PKR. 150,000 each  
**Non-Members:** PKR. 180,000 each

# Advertising Options



**POS-13**  
CATEGORY: **A**

## SPECIFICATIONS

**Position:** Interlinks - Hall 2 to 3

**Availability:** Qty-6

**Dimensions:** w28' x h12'

**Material:** Flex with Frame

**Price: Members:** PKR. 125,000 each  
**Non-Members:** PKR. 150,000 each



**POS-14**  
CATEGORY: **A**

## SPECIFICATIONS

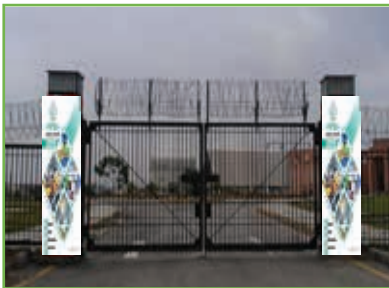
**Position:** Grill in front of Hall 2

**Availability:** Qty-30

**Dimensions:** w8' x h8'

**Material:** Flex with Frame

**Price: Members:** PKR. 35,000 each  
**Non-Members:** PKR. 42,000 each



**POS-15**  
CATEGORY: **B**

## SPECIFICATIONS

**Position:** Expo Entrance Gate # 3,4,5 & 6

**Availability:** Qty-8

**Dimensions:** w4' x h15'

**Material:** Flex with Frame

**Price: Members:** PKR. 30,000 each  
**Non-Members:** PKR. 36,000 each



**POS-16**  
CATEGORY: **B**

## SPECIFICATIONS

**Position:** Guard Room gate # 1,3,4,5 & 6

**Availability:** Qty-5

**Dimensions:** w12' x h12'

**Material:** Flex with Frame

**Price: Members:** PKR. 100,000 each  
**Non-Members:** PKR. 120,000 each

# Advertising Options



## POS-17

CATEGORY: **B**

### SPECIFICATIONS

**Position:** Gate 3 Exit

**Availability:** Qty-2

**Dimensions:** w28' x h12'

**Material:** Flex with Frame

**Price: Members:** PKR. 150,000 each  
**Non-Members:** PKR. 180,000 each



## POS-18

CATEGORY: **A**

### SPECIFICATIONS

**Position:** Hospitality Lounge Hall 2 Reception

**Availability:** Qty-1

**Dimensions:** w16' x h16'

**Material:** Customized Wood Based

**Price: Members:** PKR. 800,000 each  
**Non-Members:** PKR. 960,000 each

# Advertising Options

\* **Technical requirements for submission of data for Point of Sale Selection**

1. All design work is required in 300 DPI. (Minimum resolution)
2. All designs are required with source files (PSD, CDR, AI).
3. Designs must be sent with relevant fonts.
4. Please send all Artwork and advertisements latest by 20 December, 2026.